



PACIFIC PIECEMAKERS QUILT GUILD

Bits & Pieces

November-
December, 2024

www.pacificpiecemakers.org

Newsletter Editor: Barbara Fast

Editor's Note: I decided to combine the newsletter for November and December. As a result, there is much to report. A new feature is being added. Mary Banach will be interviewing quilters to ask what inspires them to choose certain designs or fabrics. Her initial article is about our good friend and mentor to many, Judy Riddle. See "Featured Project" below.

Barbara Fast, Editor



President's Message:



PPQG Tree for
Festival of Trees
Made by Francie

Greetings! As the year draws to a close, I am grateful for all who have contributed to our Guild. Many thanks to those who have held an office, run sales, chaired luncheons, made items for our sales, scheduled classes and programs, and all the myriad other roles that make PPQG a vital organization. I hope that you will consider continuing in, or stepping into a leadership position in the coming year. My term as president ends in March, and we need someone to take over that office. I would consider working with a new person as co-president the first year of your term to help you through the responsibilities. I look forward to hearing from you!

It was wonderful to see so many of you at our holiday luncheon. Thanks go to Sylvia Evans and Bonnie Coffey-Smith for the festive decorations, and to Tanya Radtkey of Black Oak Catering for a delicious meal. Those of you who couldn't join us were missed. Also, thank you to Kim Madson and Cheryl Faconti for an extremely successful sale at Festival of Trees. I'll let them tell you the details.

In closing, I would like to wish you all Happy Holidays and may the New Year bring you joy!

Francis Angwin, President

Fundraising Fun 2024

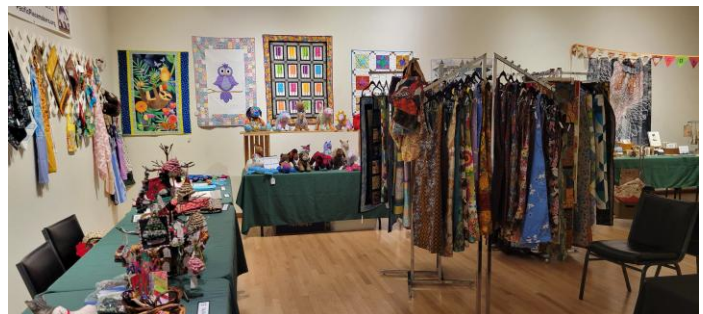


Happy Holidays Quilters! As you can see, we had some wonderful items turned in at our November meeting. It felt like Christmas came early! Thanks to all who donated! Bonnie Coffey-Smith was our last Loft raffle winner of the year. Congratulations Bonnie!

Now on to the fabulous Festival of Trees news. We sold more on Friday than we did both days last year and we SOLD OUT of our 30 Funky Friends in the first 2 ½ hours of the event! Our gross sales for the 2 days totaled \$5,511.00 (this is before taxes, credit card fees and GAC commission is taken). That beats last year's gross sales for the FOT plus the month of December at the Dolphin gallery! A special thanks to my Fundraising Co-chair, Cheryl, for all her help in getting our items prepped and set up, and for sticking by me for the whole event. To all our wonderful volunteers: Francie, Sandy H., Sandy K., Sylvia, Andrea, Marcia, Sandy L., Iris and Mary B, your help was much appreciated! By Saturday afternoon, our tables were quite sparse, so Cheryl and I decided to put a list together of needed items to think about for next year. My hope is that you can find some items you would like to make to help us replenish our inventory. Here's the list: aprons, coasters, potholders, microwave bowls (medium and large), placemats, Funky Friends stuffed animals (We really need more helpers to make these cuties!), baby quilts, kitchen towel boas, seatbelt holders, chicken pin cushions, eye soothers (masks), and crinkle toys for babies. Some other ideas: adult bibs, fiddle quilts, hanging plastic bag holders, dorm quilts (twin size to sell at the AIR event), and glass cases. If there's something else that you think of, we love new ideas! A big thank you to everyone who donated their beautiful items to our sale events this year! I wish you all a peaceful and healthy new year!



Kim Madson, Fundraising Chairman



Photos from Festival of Trees Booth

Membership

If you have not already paid, membership dues (\$40) for 2025 should be sent to Gail Spencer.

Please make welcome a new member:

Heather Hackett 15225 Arena Ct. Manchester, CA 95459

707-782-8690 HMHQuilt@gmail.com

Birthday Oct 13

Gail Spencer, Membership Chairman

Mark Your Calendars Program 2024

January 17: Comfort Quilt Workshop coordinated by Marcia Luchini. GAC 11-3. Membership meeting 1 PM.

February 21: PPQG meeting. Social – 12:30. Business meeting – 1 PM. To follow: Bonnie Coffey-Smith will preview her workshop to create “Rice Bags” that she will teach in March and April in a two-part series. This will be divided into two parts to accommodate time to embellish your creation with sashiko or other creative design work in the time between workshops.

March 20: Thursday, “Rice Bag” Workshop, Part 1

March 21: Friday, PPQG meeting. Social – 12:30. Business meeting – 1 PM.

April 17: Thursday, “Rice Bags” Workshop, Part 2

April 18: Friday, PPQG meeting. Social - 12:30. Business meeting – 1 PM.

May 15: Thursday, Lorraine Woodruff-Long will teach a one-day “Improv Mosaic” workshop.

May 16: Friday PPQG meeting. Social 12:30. Business meeting – 1 PM. To follow, Lorraine will give a lecture and trunk show.

May 17: Saturday morning Lorraine will go with those who are interested on a shopping trip to PayNTake Clothing. She will guide us to select used clothing for a quilt project she has created. Stay tuned for more details...

Sylvia Evans, Program Chairman

Featured Project: Quilting Inspiration

(Mary Banach interviewing Judy Riddle)

MB: Judy, where do your quilting inspirations come from? Last year I saw a woodworking exhibit where the carvers were required to provide a description of the inspiration behind their projects. The carvers talked about finding inspiration from memories from their past, such as a grandmother’s house.

JR: Woodworking has inspiration from the wood: the texture, the color, etc. Woodworking is not the same as quilting. Wood inspiration ideas come from the types of wood and the location where the tree grew. In quilting you really need to look at the fabric. One of the best places to start looking for inspiration for quilters is a quilt show. You look at a quilt and think about how it was made and then how you could modify the piece. I always start with the pattern and then look for the fabric. Others may look at what is needed for a landscape or an abstract or a particular color. When I'm drawn to the fabric, I look at what is the focus in a fabric, what is the background, and what could go with it. What are the light and dark elements? How will the design highlight the focus? It is all in the "Eye of the Beholder". A



good example of a huge challenge is the double wedding ring, You have so many pieces in the pattern and you need a huge amount of fabric for queen size, which is typically the size I make. MB: Let's talk about the inspiration for the One Block Wonder Falcon.

JR: First, I liked the panel, but I was worried there was too much white, and I was concerned about how it would look in a "One Block Wonder." For that pattern, some of the fabric is cut into hexagons and one central element is left whole.

MB: What are the most important quilting lessons you have learned?

JR: It is important to start with what strikes your fancy. Go to quilt shows and quilt stores. To choose good fabric, you need to see it and touch it. Other people have a very different perspective on this subject.

MB: What is the best education for quilting inspiration?

JR: The best education comes from: Quilt stores, quilt shows and LOTS of classes.

Mary Banach, Feature Editor

PPQG Retreat 2025

As we are amidst the holiday season, my thoughts turn to retreat. This is right around "my" corner, since it is early February of next year. So far we have only 16 people signed up for our retreat. If we don't have a minimum of 20 people at the retreat it will not be economically feasible to do. All you need to do is send a check for \$200.00 (made out to PPQG) to our treasurer Janice Batchelder, PO Box 1527, Gualala CA. 95445.

Our retreat is Monday through Thursday, February 3-6, 2025. We will be meeting at the Oxford Suites Hotel in Rohnert Park. You can call there directly to make your room reservation. Make sure to tell them you are part of this retreat. Make your reservation for three nights. The rooms are \$130 per night and you have a choice of one king bed or two queen beds. If you have any questions about how the retreat works, or anything at all, please don't hesitate to call or email me. 707-785-1976. JANLC56@mac.com

Since we haven't had a retreat since 2020, think of this retreat as a way to reconnect with your quilting buddies. It can be the perfect antidote to the February blues! Come along and join in the fun.

Jan Carter, Retreat Chairman

November-December Comfort Quilt News

We have much to be thankful for since there were no community emergencies or reasons to give out Comfort Quilts in November.

In looking forward, we will have our Comfort Quilt/Quilt of Valor workshop on Friday, January 17. We are going to try something different next year, hoping to really get something done on the day set aside to make quilts for our ill and grieving friends and neighbors. Details will be available the second week of January.

Have a wonderful holiday however you celebrate!

Marcia Luchini, Comfort Quilt Chairman

November Show and Tell



Presentation by the Comptche Quilters



Memorial Cloth made by Heather Hackett, new member



Quilt of Valor presented by Sandy Lockhart
Made by Marilyn Alderson & Judy Riddle



December Birthdays: December 5, Cindy Haener; December 8, Katherine Gyorfj; December 8, Paul Cupich; December 10, Sylvia Keller; December 11, Margreth Barrett; December 13, Janice Batchelder; December 20 Kim Madson; December 21, Marcia Luchini
January Birthdays: January 5, Sandy Klein; January 10, Carol Drucker; January 23, Caroline Ogg



Happy Group at Holiday Luncheon