



PACIFIC PIECEMAKERS QUILT GUILD

# Bits & Pieces

[www.pacificpiecemakers.org](http://www.pacificpiecemakers.org)

January 2011

## Don't Miss the Comfort Quilt Workshop

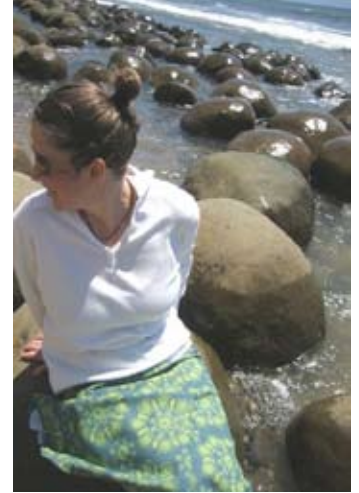


Bring your sewing machine, or not, but come to the all-day Comfort Quilt/Quilts of Valor workshop. Busy sewers will work from 10–4 on Friday, January 21. Do your own project or help someone with theirs. Fabric will be available

and cutters are needed as well as sewers. Learn to use the new Accuquilt cutter or just press seams for a busy seamstress. Lunch will be served at noon and a brief business meeting will follow. Come and help replenish the comfort quilt supply.

## Harmony Susalla to Speak in February

*Organic Cotton—The Journey is the Prize*  
Learn why Gualala's own Harmony Susalla left a successful career designing for the largest companies in the world (Walmart, Target, Williams-Sonoma, etc) to start Harmony Art Organic Design, her own organic cotton fabric company. If you were ever curious as



to how textiles are designed and printed, this is a lecture you will not want to miss. Harmony will share her design inspiration, production challenges, manufacturing decisions and vision for the future. In addition, you will get an insider's view on the current "green" movement in fabrics, what it means and where it's headed.

## President's Message

I hope you all had a very good Holiday Season and I wish you all a Very Happy New Year. I'm writing this before we leave for the Frozen North and by the time you read it I hope we've managed to thaw out and get warm again. I just hope we don't get snowed in.

Well, here I am back on my soap box again. I know you can't see it in the picture but I am standing on a soap box. This is another plea for volunteers to do the jobs we need filled next year. I will have the job descriptions and the sign up sheet at the January meeting. Please check it out. The Nominating Committee will meet some time during the last week of January. We will be calling. I hope you will respond positively.

—Joyce Gaudet



## Shhhhhh.....Whisper this to your friends.

The results of the Whisper Challenge were displayed at Gualala Arts Center in December. It was inspired an article in July/August issue of *Quilting Art Magazine*.

Remember the game of “Telephone” that we played as kids? Well, seven quilters did the same thing but with fabric. It all started with a landscape of a balcony view. The second quilter was the only one who saw the first quilt. Each quilter after that saw only the quilt handed off to her. The challenge was then to find an inspiration from that quilt but create her own version of it. Each one of them had a month to complete this task and then pass the challenge on to the next quilter. The quilters participating (in order of completion) were Kalynn Oleson (beginning quilt pictured here), Carol Tackett, Marilyn Limbaugh, Donna Blum, Jan Carter, Chris Smith and Bonnie Toy. You can see the results on the PPQG website [www.pacificpiecemakers.org](http://www.pacificpiecemakers.org)

Watch for news of the next Whisper Challenge... now it's your turn to try it.



## Membership News

If you have not yet renewed your membership for 2011, please take care of it now. Mail a check payable to PPQG in the amount of \$40 (plus Angel Gift, if you are able) to Gail Spencer, PO Box 1489, Gualala, CA 95445. YOUR guild needs everyone's support. Thank you.

## Treasurer's Report

<b>Balance at beginning of November..</b>	<b>\$9,007.00</b>
Plus: Monthly deposits per Income	
Dues 2011 .....	\$90.00
Angel donations .....	\$10.00
Meeting fees.....	\$10.00
Beginning quilt class.....	\$232.50
Retreat refund.....	\$275.00
Dues 2010 .....	\$40.00
<b>Total Income .....</b>	<b>\$657.50</b>
Minus: Monthly checks from Expense	
Nancy Brown lecture .....	\$350.00
Nancy Brown travel .....	\$120.00
GAC rent .....	\$206.00
<b>Total expenses .....</b>	<b>\$676.00</b>
<b>Balance at month end .....</b>	<b>\$8,988.50</b>

## 2011 Winter/Spring Programs

Information about signing up for workshops will be forthcoming. Look for an email notice.

January 21	Comfort Quilts Workshop
February 18	Harmony Susalla lecture
Feb. 9&10, 16&17	Intermediate quilting class
March 16&17	Painting Pizazz with Sherrill Kahn*
March 18	Sherrill Kahn lecture
April 15	Carol Larsen lecture
May 19	Rose Hughes workshop**
May 20	Rose Hughes lecture
June 17	Comfort Quilts Workshop

\* [www.impressmenow.com](http://www.impressmenow.com)

\*\*[www.rosehughes.com](http://www.rosehughes.com)



*A merry band of quilters enjoyed the guild Holiday luncheon on December 12.*

## **Challenge is Fast Approaching**

### *Rhapsody in Hue*

Pacific Piecemakers Quilt Guild 2011 Challenge  
Opening Reception Friday April 1, 2011 at 5:00p.m.  
Exhibit remains through May1, 2011  
Burnett Gallery

Our theme this year is *Rhapsody in Hue*. It was chosen as the most popular and was suggested by Anita Kaplan. This theme should bring to mind many ideas and in turn, many entries. It is meant to inspire and tickle the imaginations of our quilters. We've not specified any fabric to be used nor have we placed any restrictions on size. We've invited family members of our guild to join us in this challenge. This challenge will also help Gualala Arts celebrate its 50th Anniversary. The rules remain simple, no judges and no jury. It's all about

participation. You are invited to our show—there will be many wonderful delights for your eyes and your mind.

This is the 15th year that the Pacific Piecemakers Quilt Guild has challenged its members to create quilts around a common theme. The themes have been varied and inspiring. Some have focused on one pattern (Log Cabin was one of the first), math, self-portraits, inspiring artists, the perfect 10, going green, and flights of fancy. Quilters of all levels find challenges a venue to stretch their imagination and workmanship. We have fun with fabric, thread, dyes and embellishments. Our Challenge shows have delighted residents and visitors with our collective creativity in the world of the art of quilting.